

## AS 377

### HF Whip antenna



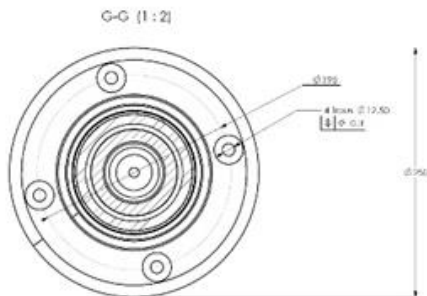
**VLF/LF/MF/HF Rx/Tx passive antenna.**

**AS377** is a glass fibre passive whip.

Tx 1.5 - 30 MHz (with tuning unit).

Rx 10 kHz - 30 MHz.

**Typical use:** Surface ships (Defence communication systems)



#### ■ TECHNICAL CHARACTERISTICS

- One part antenna,
- Epoxy glass fibre,
- Naval brass metallic parts,
- Corrosion free,
- Shock & Vibration resistant,
- High reliability,
- Feeding point: Above mounting plane,
- Lightning capability

### TECHNICAL DATA

Frequency range	Rx 10 kHz - 30 MHz TX 1.5 MHz - 30 MHz (with tuning unit)
Max. Input power	1 kW CW / PEP
<b>Dimensions</b>	
Height	10.2 m
Weight	27 kg
Max. diameter	0.25 m
Cage	F8329
NNO	5985-14-570-0054

*All values are typical*